



## SHOW THE BEAUTY OF SOUTH MOUNTAIN!

South Mountain Partnership is seeking photos of the South Mountain landscape, events, agriculture, recreation, and people enjoying where they live. We are passionate about our home on the South Mountain. It is a special place with special views, plentiful water, orchards, families at play, abundant wildlife, hiking trails, history, fruits stands, and more. Help us bring our core messages to life.

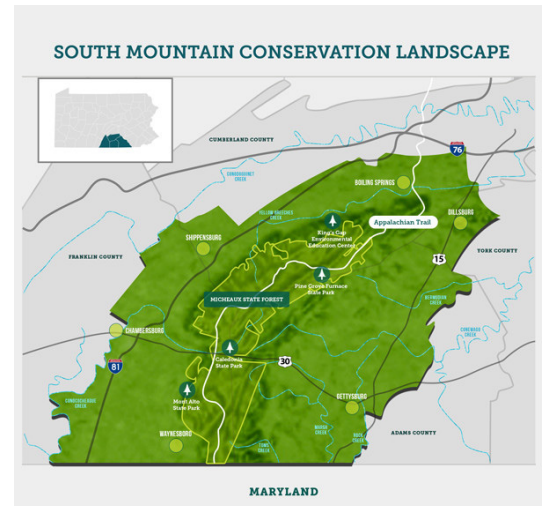
- Know South Mountain (*Every breath, every step, every drop is our shared landscape*)
- It's Your Choice (*Choose wisely*)
- Live Healthy (*Lead healthy, grow healthy*)
- Legacy Lives On (*Be part of the South Mountain Partnerships legacy of healthy land, clean water, fresh air and vibrant communities.*)

A picture is truly worth a thousand words!

There are two contests. Each contest will have one Grand Prize Winner of \$150, and four honorable mentions of \$50 each.

Contest #1 - *South Mountain Summer Photo Contest runs from August 8 to September 12*

Contest #2 - *South Mountain Fall Photo Contest runs from September 26 to November 7*



*Each contest will have one grand prize winner and four honorable mentions.*

*Grand prize: \$150  
Honorable Mention: \$50*



Here are the CONTEST RULES:

1. Anyone is eligible to enter; all photos must be taken of the South Mountain PA area. (Please see map.)
2. Photos must be the original work of the individual submitting the photo/image file. The contest accepts both portrait and landscape orientation; however, landscape orientation is preferred.
3. Each submission must be made as a digital file with a minimum of 300dpi and sized at least 4x6 or 1200 pixels by 1800 pixels. Larger images are welcome. Each submission must have a completed entry form and release form to be eligible and all digital files must contain the last name of the photographer. Multiple submissions up to 20 photos may be entered per contest. SMP will not accept resubmissions in the second contest. Download the [ENTRY FORM HERE](#). By entering the contest, you are agreeing to provide the South Mountain Partnership with indefinite and infinite use of the image/photo.
4. Entrants in the SMP Photo Contest agree to the contest rules and accept selections as final.