



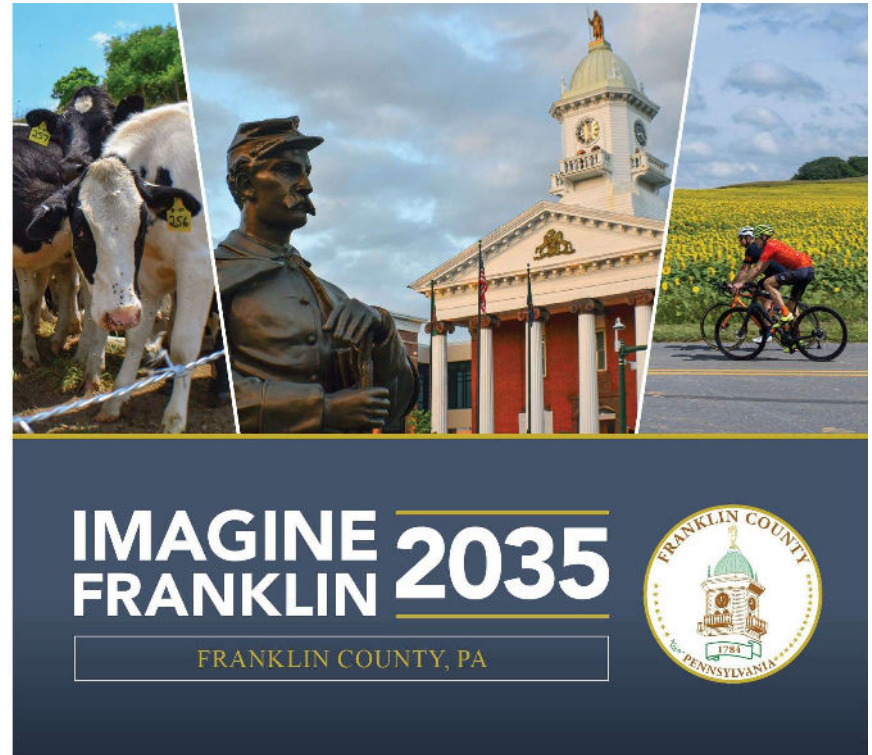
# Imagine Franklin County 2035 Comprehensive Plan

Power of the Partnership

September 27, 2024

# Imagine Franklin County 2035 Comprehensive Plan

- A land use and growth management plan prepared by the county planning commission and adopted by the county commissioners.
- Establishes broad goals and criteria for municipalities in their planning initiatives.
- Updated every 10 years
- Based on extensive citizen and stakeholder input!



# Vision and Mission



## **VISION**

FRANKLIN COUNTY WILL BE A PLACE THAT EMBRACES AN EVER-CHANGING FUTURE WHILE RESPECTING OUR HISTORY AND TREASURING OUR SMALL TOWNS AND NATURAL LANDSCAPES TO MAKE SURE OUR COMMUNITY IS WELCOMING, AND EVERY RESIDENT HAS AN OPPORTUNITY TO PROSPER AND THRIVE.

## **CORE MISSION**

FRANKLIN COUNTY WILL STRIVE TO MEET OUR VISION BY ACTIVELY PURSUING THE FOLLOWING: ENSURING OPPORTUNITIES FOR A HIGH QUALITY OF LIFE WHERE PEOPLE CAN LIVE HEALTHY, FULFILLED LIVES APPLYING A BALANCED APPROACH TO GROWTH WHERE WE PROTECT OUR SENSITIVE NATURAL RESOURCES, AGRICULTURAL ECONOMY, AND LEGACY BUSINESSES WHILE GROWING SUSTAINABLY TO MEET THE NEEDS OF OUR FUTURE POPULACE DEVELOPING INNOVATIVE POLICIES THROUGH COLLABORATIVE EFFORTS THAT STRIVE TO BENEFIT ALL RESIDENTS OF THE COUNTY.



# Public Engagement

- 5 open house events (3 in-person and 2 virtual)
- 7 Steering Committee meetings
- 13 “pop-up” events across the County
- 17 Focus Groups and Municipal Meetings
- 54 stakeholder interviews
- 1,527 survey responses
- 35,000 plus people reached through Facebook promotional posts

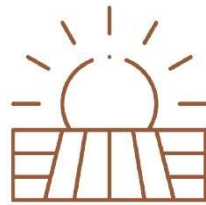


# Goals



## QUALITY OF PLACE

1. Create a strong sense of place within our historic urban centers by activating underutilized and vacant spaces and supporting economic vitality.
2. Ensure our transportation network supports our goals.



## QUALITY OF LIFE

1. Provide community facilities in concert with our approach to future growth.
2. Support human services that work to help people improve their lives and their livelihood.
3. Provide access to quality housing that meet the needs of a growing community.



## QUALITY OF GROWTH

1. Expand attainable housing options.
2. Strengthen opportunities to grow our workforce and educational assets.
3. Balance growth opportunities that provide housing and business development to support future populations with preservation of the county's scenic beauty and natural resources.



# Focus Areas



## LAND USE & NATURAL RESOURCES

Franklin County will impact quality of place, quality of life, and quality of growth through acting on the following:

- Support protection of farmlands
- Support protection of natural areas
- Promote development patterns consistent with the county's Character Area Map



## HOUSING

Franklin County will support quality of life and quality of growth for residents by supporting the following actions:

- Create a Local Housing Best Practices Toolkit to assist municipalities and developers in planning and zoning for attainable housing
- Expand tools and resources that will support the goals of Imagine Franklin 2035 particularly in instances where urban centers are impacted
- Promote multi-municipal and regional planning and zoning that supports a fair, coordinated distribution of housing choices across the county



# Focus Areas



## WORKFORCE & EDUCATION

Franklin County will create quality of growth through strengthening opportunities to grow our workforce and educational assets by doing the following:

- Confront the childcare and transportation barriers that hinder the workforce participation of working families, low-income citizens, and citizens with disabilities
- Provide housing options to meet the needs of Franklin County's current and future workforce
- Improve the delivery of workforce training and worker availability by addressing regulatory, licensing, and funding burdens that create obstacles for businesses, employees, schools and students
- Attract and retain employees by developing agile organizations as well as private and public sector employers that balance the needs of different types of workers and employers to find common ground and maximize positive outcomes for both



# Focus Areas



## **COMMUNITY FACILITIES**

Franklin County will build quality of place, quality of life, and quality of growth by doing the following:

- Broaden and publicize recycling opportunities
- Support the Adams and Franklin County Broadband Study outcomes
- Balanced approach to renewable energy development
- Promote and encourage outdoor recreation and park system development
- Support implementation of Franklin County's Emergency Management Plan





# Focus Areas



## STRENGTHENING OUR URBAN CENTERS

Franklin County will create quality of place through acting on the following:

- Create a Development Best Practices Toolkit to assist municipalities and developers in planning and zoning for context sensitive design
- Expand tools and resources that will support the goals of Imagine Franklin 2035 particularly in instances where municipalities have the most influence
- Promote Historic Preservation resources and support for main street redevelopment
- Promote multi-municipal planning and zoning to support an equitable and the coordinated distribution of land uses throughout the county



## HUMAN SERVICES

Franklin County will enhance the quality of life for people living in the County through following through with these initiatives:

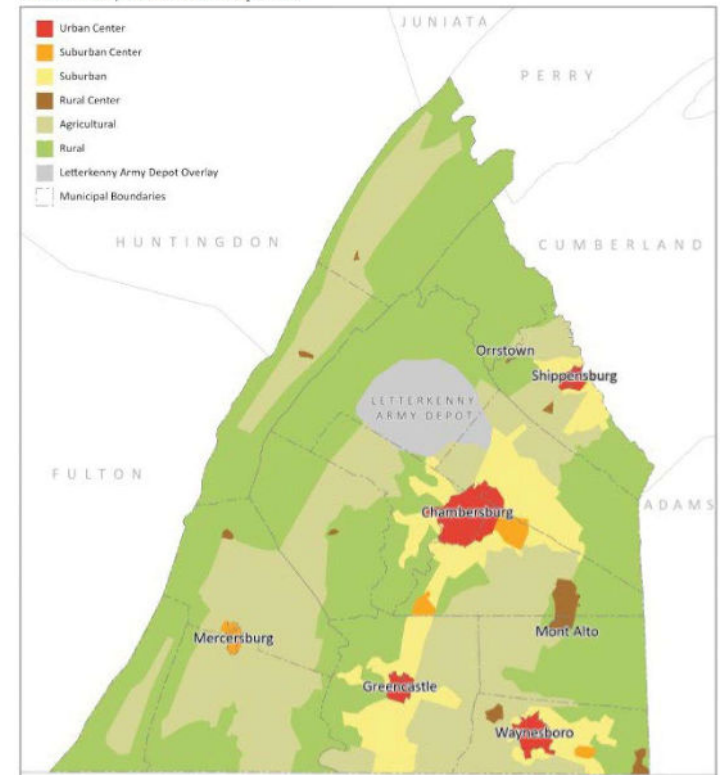
- Support state and local efforts to expand funding for and improve childcare services throughout the county
- Support Franklin County Human Services Division



# Future Land Use – Character Area Map

- Guides growth and resource preservation for Franklin County communities over the next 10 years
- Identifies the following character area categories:
  - Urban Center
  - Suburban Center
  - Suburban
  - Rural Center
  - Rural
  - Agricultural
  - Plus, Letterkenny Army Depot Overlay
- Community planning principles and design standards accompany each character area to cover the three themes of the county Comprehensive Plan: Quality of Life, Quality of Place, and Quality of Growth

Franklin County Character Area Map (CAM)



# Plan Implementation – 3-Year Strategy

- Illustrates how “Imagine Franklin 2035” will be implemented over Years 1 – 3 of the plan.
- Provides the most realistic timeline to achieve successful outcomes
- Actions that lead to real and anticipated outcomes is the goal of the “Imagine Franklin 2035” 3-Year Implementation Strategy and those outcomes must be measurable, transparent, and tied to the core values of the community
- Of the “Imagine Franklin 2035” 62 Action items, 35 have been identified for implementation within the next 3 years.
- Five are legislative action items that the County will seek to implement, 24 are new or enhancements to existing programs, and six strategies call for sector area planning or further research.



# Questions?

## CONTACT

For more information, please contact:

Quentin Clapper  
Senior Planner  
Franklin County Planning Department  
272 N. 2<sup>nd</sup> Street  
Chambersburg, PA 17201  
[planning@franklincountypa.gov](mailto:planning@franklincountypa.gov)  
(717) 261-3855

